



## ENGINEERING DIVISION

701 Laurel Street/Menlo Park, CA 94025-3483

Phone 650.330.6740/Fax 650.327.5497

SEPTEMBER 19, 2011

### Addendum No. 1


**PROJECT:** CHRYSLER PUMP STATION REHABILITATION PROJECT  
PROJECT NUMBER 20-056

**OWNER:** CITY OF MENLO PARK

Addendum No. 1 for the above project consists of the following:

1. This acknowledgement form (see important notice below)
2. Revisions to the bid form.
3. Bid Bond.
4. Revisions to the specifications.
5. Revisions to the plans.

**NOTICE: THIS FORM MUST BE SIGNED AND RETURNED WITH YOUR BID. FAILURE TO SO INCLUDE OR ACKNOWLEDGE A CLARIFICATION MAY RESULT IN THE BID BEING REJECTED AS NOT RESPONSIVE.**

  
\_\_\_\_\_  
Matheu B. Oscamou, Interim Engineering Services Manager

Date: \_\_\_\_\_ Received by: \_\_\_\_\_

Title: \_\_\_\_\_

Name of Company: \_\_\_\_\_

\_\_\_\_\_

**SCOPE OF WORK**

---

**PROPOSAL TO THE CITY OF MENLO PARK  
CHRYSLER PUMP STATION REHABILITATION PROJECT  
ATTACHMENT "A": ITEM PRICE SCHEDULE  
September 22, 2011**

<b>Item No.</b>	<b>Item Description</b>	<b>Item Price (In words)</b>	<b>Total Contract Sum (In figures)</b>
1	PIPE: 36 INCH DIAMETER x 5' SS 316, SCH 40, WELDED PIPE; 2 REQ.		\$
2	PIPE COUPLING: 36 INCH DIAMETER, "DRESSER COUPLING"; 2 REQ.		
3	MODULAR PIPE SEALS: "LINK-SEAL" BRAND, NO SUBSTITUTIONS, EPDM BLACK, PN LS-500-S-316-36; 4 SETS.		
4	SHELF ANGLE BRACKET: 6"x6"x3/8"x40" SS 316; 4 REQ. WITH KWIK BOLT SS 304, 5/8x3 1/8; 16 REQ.		
5	WOOD PLANKS: PRESSURE TREATED LUMBER 2x10x12; 13 REQ.		
<b>TOTAL CONTRACT SUM</b>			\$

(Abbreviations: LF=linear feet, SF=square feet, SY=square yards, CY=cubic yards, TN=tons, LS=lump sum, EA=each)

Prices shall be good for 200 working days from opening of bids.

CITY OF MENLO PARK  
STATE OF CALIFORNIA



**BID BOND**

**Note:** Bidders may use this form as the Bid Bond to accompany proposals or may substitute standardized bond forms prepared by their surety. If substitute forms are submitted, the following text shall be included.

KNOW ALL PERSONS BY THESE PRESENTS, that we, \_\_\_\_\_, as Principal, and \_\_\_\_\_, as Surety, are held and firmly bound unto the City of Menlo Park, hereinafter called "City", in penal sum of ten percent (10%) OF THE TOTAL AMOUNT OF THE BID OF THE PRINCIPAL submitted to the said City for the work described below for the payment of which sum in lawful money of the United States, well and truly to be made, we bind ourselves, our heirs, executors, administrators, successors and assigns, jointly and severally, firmly by these presents.

THE CONDITION OF THIS OBLIGATION IS SUCH that whereas the Principal has submitted the accompanying Proposal dated \_\_\_\_\_, 20\_\_\_\_, for **Chrysler Pump Station Rehabilitation Project.**

NOW, THEREFORE, if the Principal shall not withdraw said Proposal prior to the date and time for the opening of bids, and if the Principal is awarded the Contract and shall within the period specified in the Proposal after receiving notice that the Contract has been awarded and the prescribed forms are presented to him/her for signature, enter in a written Contract with the City, in accordance with the Proposal as accepted and give insurance and bond with good and sufficient surety or sureties, as may be required, for the faithful performance and proper fulfillment of such Contract and for the payment for labor and materials used for the performance of the Contract, or in the event of the withdrawal of said Proposal within the period specified or the failure to enter into such Contract and give such City bonds, within the time specified, if the Principal shall pay the City the difference between the amount specified in said Proposal and the amount for which the City may procure the required work and/or supplies, if the latter amount be in excess of the former, together with all costs incurred by the City in again calling for bids, then the above obligation shall be voided and of no effect, otherwise to remain in full force and virtue.

Surety, for value received, hereby stipulates and agrees that no change, extension of time, alteration or addition to the terms of the Contract on the call for bids, or to the work to be performed thereunder, or the specifications accompanying the same, shall in anywise affect its obligation under this bond, and it does hereby waive notice of any such change, extension of time, alteration or addition to the terms of said Contract or the call for bids, or to the work, or to the specifications.

In the event suit is brought upon this bond by the City and judgment is recovered, the Surety shall pay all costs incurred by the City in such suit, including a reasonable attorney's fee to be fixed by the court.

IN WITNESS WHEREOF, the above-bounded parties have executed this instrument under their several seals this \_\_\_\_\_ day of \_\_\_\_\_, 20\_\_\_\_, the name and corporate seals of each corporate party being hereto affixed and these presents duly signed by its undersigned representatives, pursuant to authority of its governing body.

(Corporate Seal)

Principal  
By: \_\_\_\_\_

(Acknowledgment)

Title: \_\_\_\_\_

(Corporate Seal)

Surety  
By: \_\_\_\_\_  
Attorneys-in-fact

(Acknowledgment)

Title \_\_\_\_\_



**Bid Form:**

1. Delete previously supplied "ATTACHMENT "A": ITEM PRICE SCHEDULE" and replace with updated ATTACHMENT "A" dated September 22, 2011.

**Bid Bond:**

1. Insert "Bid Bond" form into Invitation for Informal Bid.

**Specifications:**

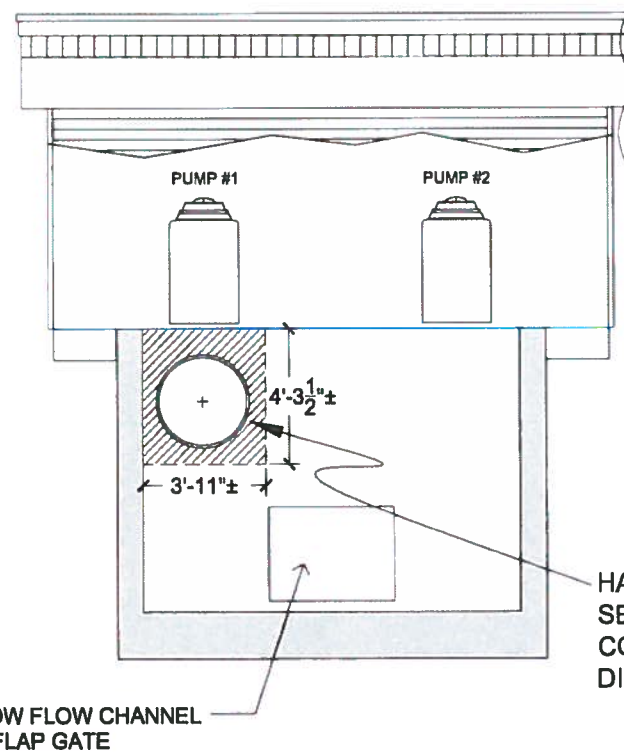
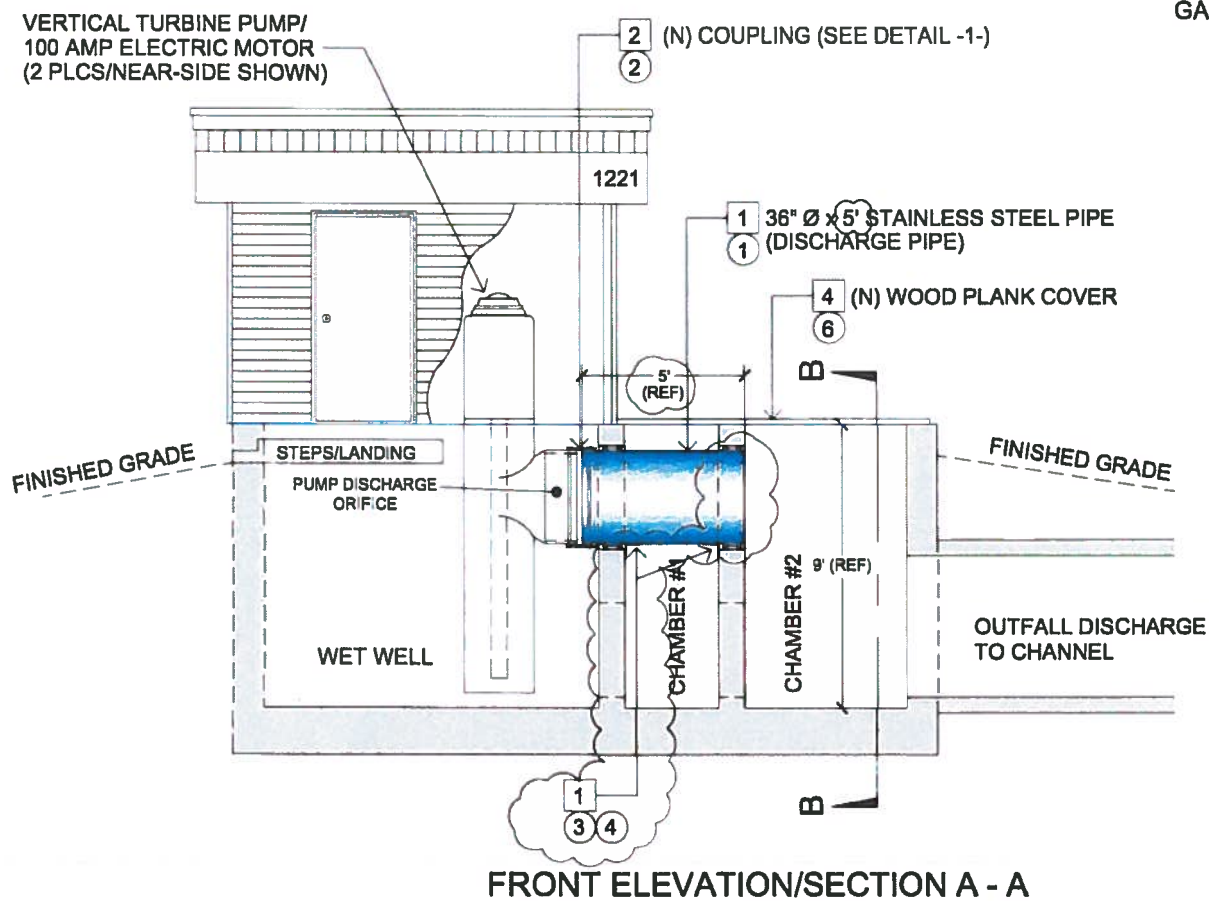
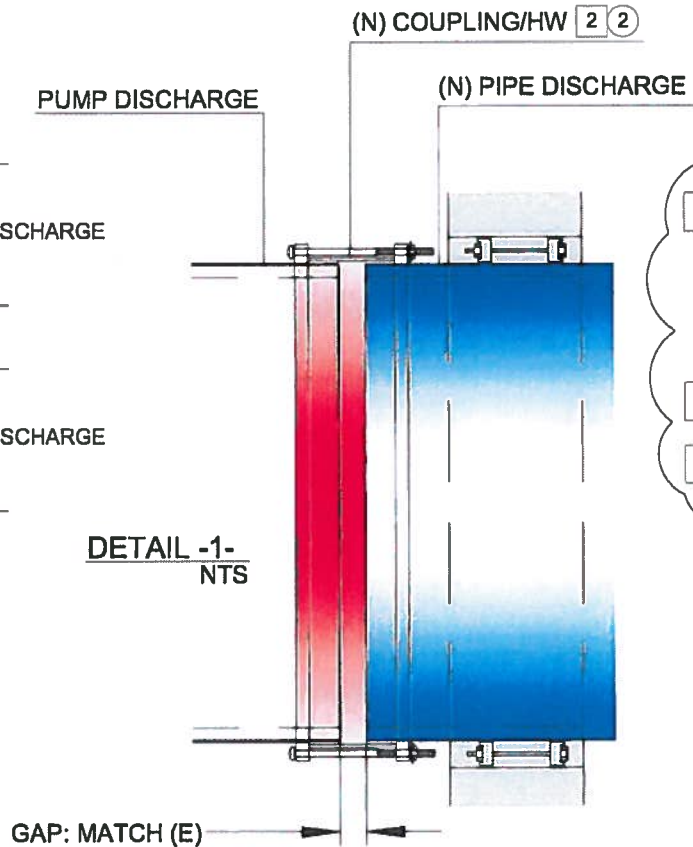
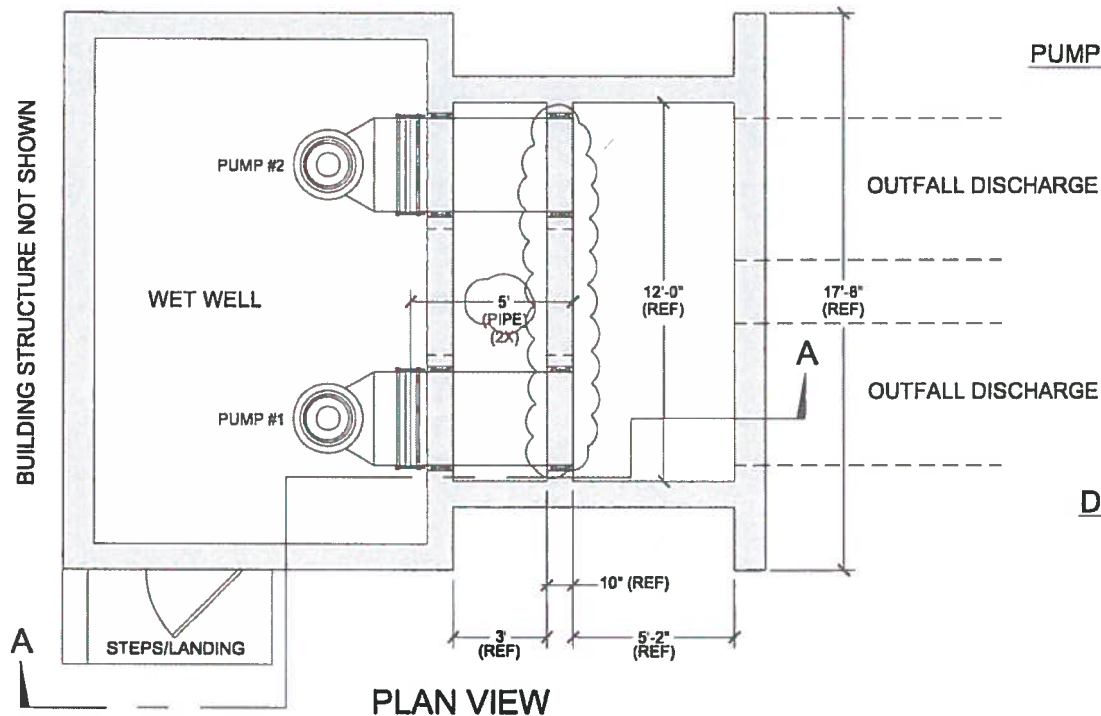
1. Invitation For Informal Bid, end of page 4, add: "**BID DEPOSIT.** A Bid Deposit equal to at least ten percent (10%) of the total amount of the bid shall be placed in the sealed Proposal. The Bid Deposit shall be in one of the following forms: cash, cashier's check or certified check payable to the City, or bidder's bond in favor of the City executed by an authorized surety company. A Bid will not be considered unless one of the forms of bidder's security is enclosed with it."
2. Invitation For Informal Bid, page 5 "**SCHEDULE**" change to read: "The Notice to Proceed will be issued to the contractor no sooner than May 7<sup>th</sup>, 2012 and the contractor will have **sixty (60) working days** to complete the work, weather permitting. Contractor shall only work on one discharge pipe at a time, leaving at least one pump available for use by the City, should pumping become necessary. The contractor is responsible for scheduling and completing the work within the allowable working days. No additional compensation will be made for partial work or work required to be redone due to necessary use of the pump station. Hours of construction shall be Monday-Friday 8am-5pm."
3. Exhibit "A," paragraph 3 "**PROJECT DESCRIPTION/SCOPE OF WORK**" change to read: "...flap gate residual material, and two (2) 36 inch pipe couplings one at a time, leaving at least one pump available for use by the City, should pumping become necessary. Installation of **new** equipment consists of two (2) 5' length Stainless Steel 36 inch pipes, two (2) 36 inch pipe couplings, four (4) EPDM black "link-seal" pipe seal sets, two (2) custom fabricated SS 316 angle brackets, and replacement of the wood plank cover..."

**Plans (refer to clouded revisions to sheet 2 of 3 dated 09.19.11, 1 page total):**

1. All revisions to plans have been indicated with revision clouds to sheet 2 of 3.

# CHRYSLER PUMP STATION

1221 CHRYSLER DRIVE, MENLO PARK, CA 94025



**NOTES:**

- 1 DEMOLISH AND REMOVE THE EXISTING DILAPIDATED PUMP DISCHARGE PIPE MATERIAL. REPLACE WITH NEW 36 INCH DIAMETER STAINLESS STEEL PIPE (ITEM 1). FIELD VERIFY LENGTH PRIOR TO INSTALLATION AND ASSEMBLY. INSTALL "LINK-SEAL" PIPE SEAL, ITEM 3, 4 PLCS, PER MANUFACTURER'S ASSEMBLY INSTRUCTIONS. INSTALL ANGLE BRACKET, ITEM 4, AT LOCATIONS NOTED, 4 PLCS; SEE SHEET 3 OF 3, DETAILS S1 AND S2.
- 2 REMOVE EXISTING DISCHARGE PIPE COUPLER AND REPLACE WITH NEW COUPLING (ITEM 2). MAINTAIN AN EXPANSION GAP BETWEEN THE PUMP DISCHARGE ORIFICE AND DISCHARGE PIPE. INSTALL PER MANUFACTURER'S INSTRUCTIONS. PER DETAIL -1-
- 3 REMOVE EXISTING FLAP GATES RESIDUAL MATERIAL.
- 4 REMOVE AND REPLACE THE EXISTING WOOD PLANK COVER (ITEM 6) WITH PRESSURE TREATED LUMBER TO MATCH (E) DIMS.
- 5 CHAMBERS TO BE CLEANED AND DEBRIS REMOVED FOLLOWING CONSTRUCTION.

PARTS MATRIX (BILL OF MATERIALS)			
ITEM	PART	DESCRIPTION	QTY
1	PUMP DISCHARGE PIPE	36 INCH Ø x 5', SS 316, SCH 40, WELDED.	2
2	COUPLING	"DRESSER" COUPLING 12"x36" EPOXY COATED	2
3	MODULAR PIPE SEALS	LINK-SEAL MODULAR SEAL EPDM BLACK LS-500-S-316-38, OR EQUIV.	4
4	SHELF ANGLE: HARDWARE:	L6x6x3/8x40 INCH, SS 316 ANCHOR BOLT: HILTI KWIK BOLT SS 304, 5/8x3 1/8	4 16
5	WOOD PLANK COVER	PRESSURE TREATED LUMBER 2x10 x 10'	13

HATCHED AREA DELINEATES (E) CONC. WALL TO BE SAWCUT. SEE SHEET 3 OF 3, DETAILS 1/S1 AND 2/S2 FOR STRUCTURAL CONSTRUCTION OF CONCRETE WALL AND INSTALLATION OF DISCHARGE PIPE, LINK-SEALS AND ANGLE SHELF; TYP (4 PLCS).

REV	DESCRIPTION	DATE
1		09.02.11
2		09.19.11

**CHRYSLER PUMP STATION**  
1221 CHRYSLER DRIVE, MENLO PARK, CA 94025  
**CITY of MENLO PARK**  
701 LAUREL STREET MENLO PARK, CA 94025



MATHEU OSCAMOU, P.E., ENGINEERING SERVICES MANAGER

70736

R.C.E.  
DATE

1 IN = 6 FT

SHEET 2 OF 3