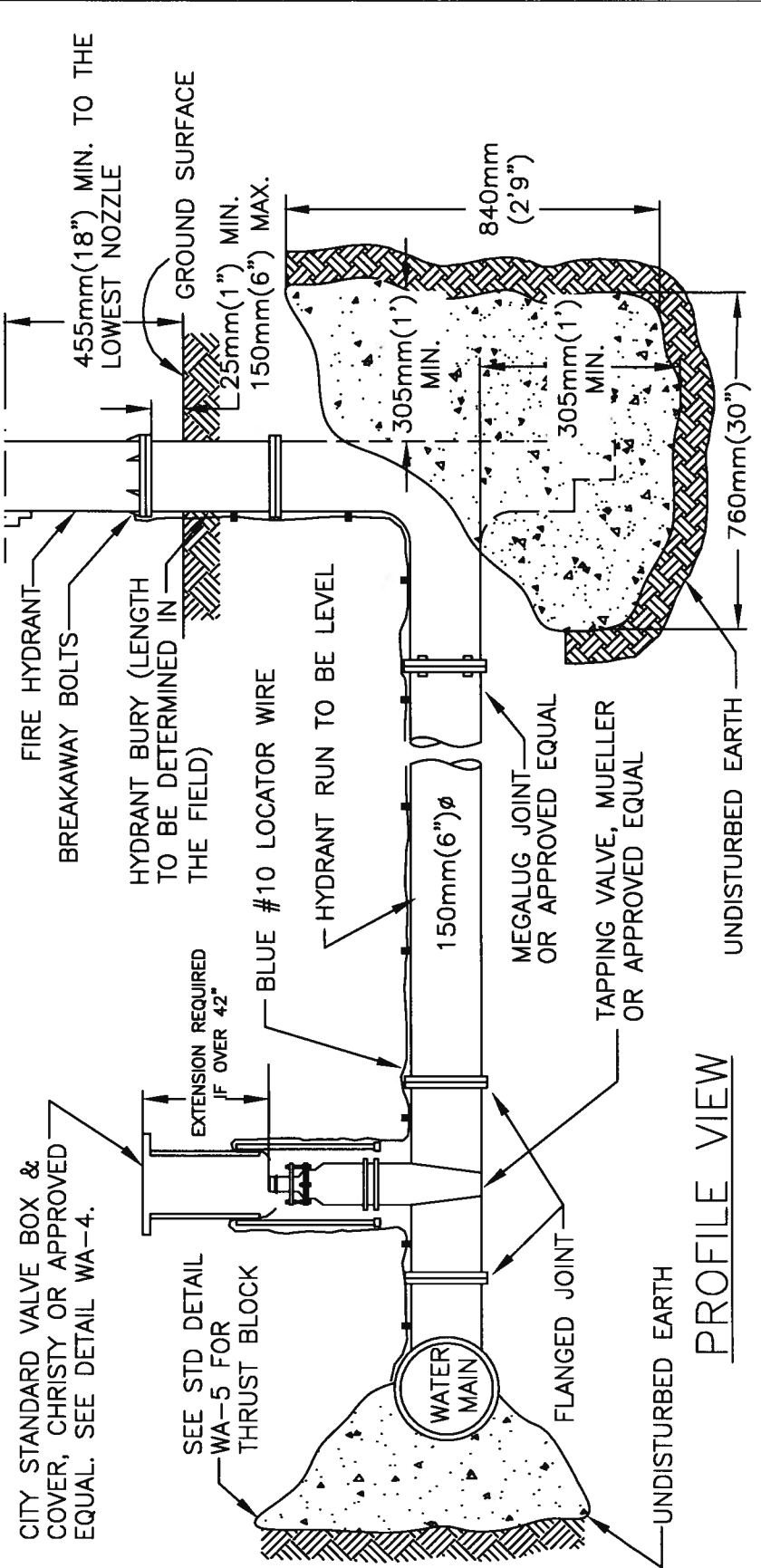
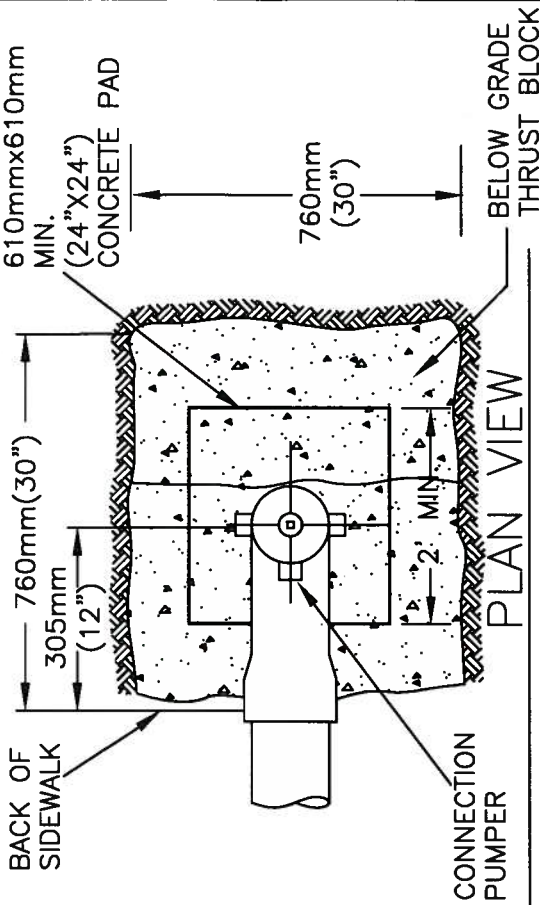


**NOTES:**

1. FOR HYDRANT LOCATION, SEE DETAIL WA-2.
2. CONCRETE PAD SHALL BE 4" THICK, MINIMUM 2'X2', OF CLASS "A" CONCRETE ON 100MM (4") CLASS "2" AGGREGATE BASE, SEE DETAIL G-3. ITEM 1, FOR MIX DESIGN.
3. HYDRANT SHALL BE OF THE WET BARREL TYPE CLOW 76 OR APPROVED EQUAL WITH TWO 65MM (2 1/2") NATIONAL STANDARD THREAD NOZZLES, ONE 114MM (4 1/2") PUMPER NOZZLE AND CLOW LONG BEACH 400 BREAK-OFF CHECK VALVE.
4. HYDRANT SHALL BE COATED WITH 100% ACRYLIC LATEX, SEMI-GLOSS, EXTERIOR YELLOW PAINT.
5. FITTINGS SHALL COMPLY WITH WA-23.



**CITY OF MENLO PARK STANDARD DETAILS**



NO.	REVISIONS	DATE
1	WET BARREL	8/15/07
2	SIGNATURE UPDATE	03/07/08
3	DETAILS & NOTES	03/20/08
4	MODEL	07/29/08
5	NOTE_5_ADDED	08/02/09

**FIRE HYDRANT INSTALLATION**

APPROVED

*[Signature]*  
SENIOR ENGINEER, R.C.E. No.C70736

STD. DETAIL No. WA-1

DRAWN NN/VP/JEF	CHECKED JAB/VP/JAR	DATE 10/06/09	SCALE NONE	SHEET 1
--------------------	-----------------------	------------------	---------------	------------