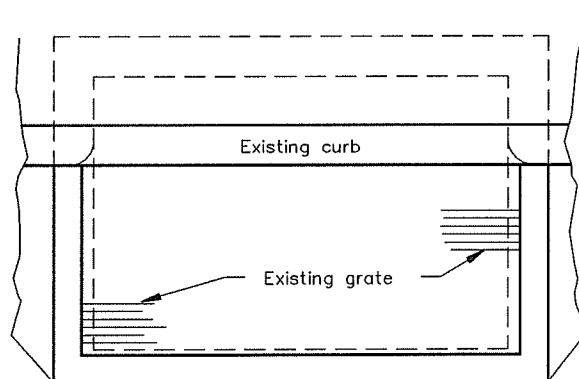
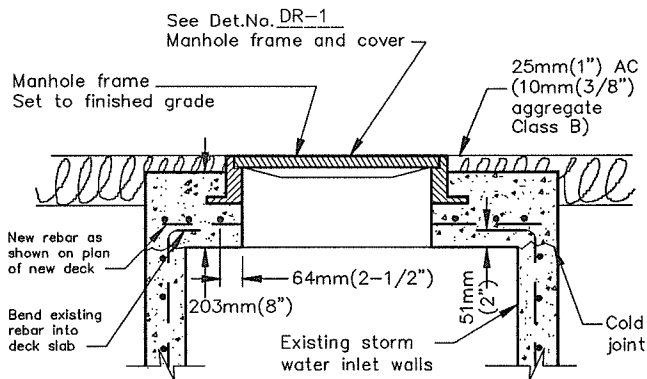


TYPICAL SECTION OF EXISTING SWI

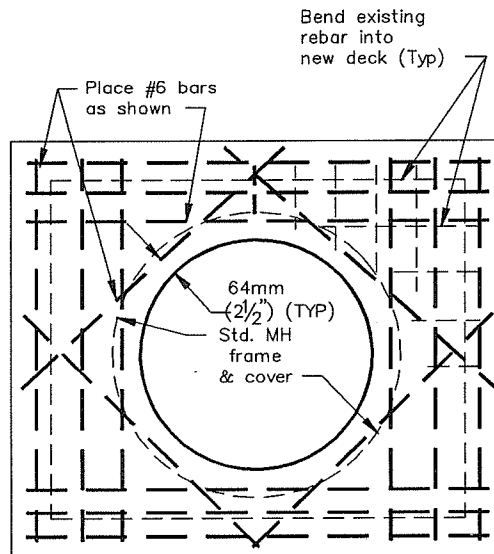


PLAN OF EXISTING SWI



Concrete mix: Class A (6 sacks)
246kg/sq.cm(3500psi) compressive strength @ 28 days

TYPICAL SECTION OF NEW DECK



PLAN OF NEW DECK

All units are in metric
Non-metric units are in brackets

ACAD FILENAME: SMCON



CITY OF MENLO PARK STANDARD DETAILS

NO.	REVISIONS	DATE

**STORM WATER INLET
TO JUNCTION
BOX CONVERSION**

APPROVED
Y. A. Quinn
Director of Engineering Services R.C.E. No. 40998

DRAWN CHECKED NN DATE 1-1-97 SCALE NTS SHEET 1 OF 1

STD. DETAIL No.: **DR-6**