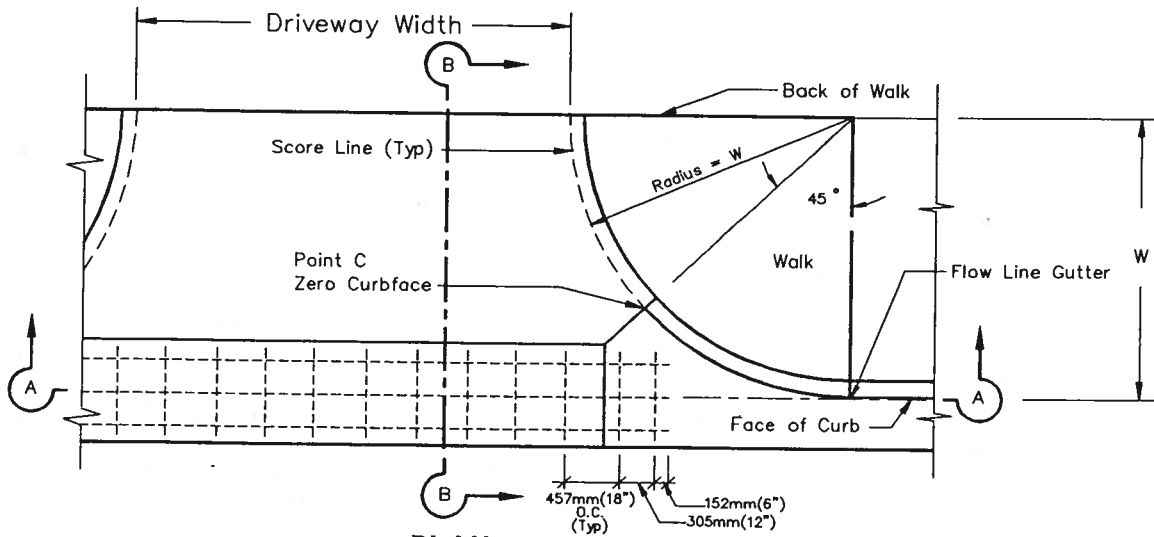
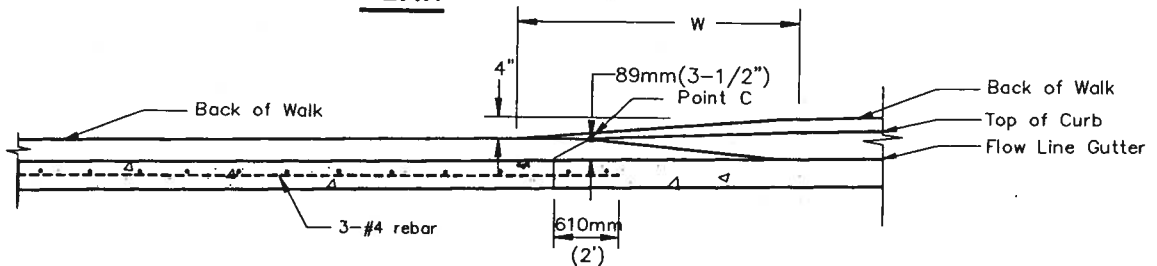


Cold joints and pay limits indicated by heavy solid lines  
(Burke Keyed Cold Joints may be substituted for cold joints)

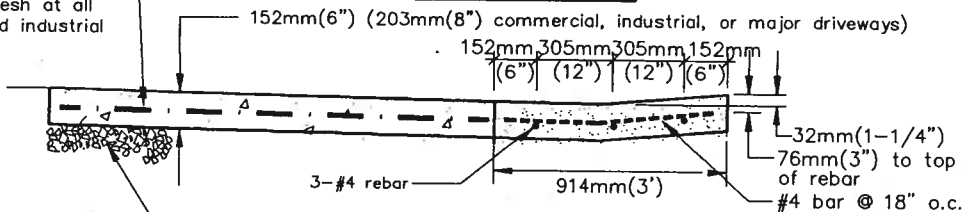


**PLAN**



**SECTION A - A**

152mm x 152mm (6"x6")/  
#10-#10 PC Mesh at all  
commercial and industrial  
driveways.



**SECTION B - B**

152mm(6") crushed AB

**NOTES:**

1. Water test FL in presence of City Engineer
2. General Concrete Notes shall apply

All units are in metric  
Non-metric units are in brackets

ACAD FILENAME: DEPDRWAY

**CITY OF MENLO PARK STANDARD DETAILS**



NO.	REVISIONS	DATE

**DEPRESSED DRIVEWAY**

APPROVED

*John A. Chason*  
Director of Engineering Services R.C.E. No.40998

DRAWN	CHECKED	DATE	SCALE	SHEET
		1-1-97	NTS	1 OF 1

STD. DETAIL No.: **CG-15**