

"Of all the questions which can come before this nation, short of the actual preservation of its existence in a great war, there is none which compares in importance with the great central task of leaving this land even a better land for our descendants than it is for us."

– President Theodore Roosevelt

Somerset County, with its abundant opportunities for business, scenic vistas, natural resources, historic hamlets and open spaces, has been described as one of the most desirable places to live and work in the nation. Because of this impressive listing, more and more people are choosing to live in Somerset County. These residents have supported the open space tax since its inception in 1994, and because of this unified dedication, Somerset County has been able to maintain a system of greenways, parks, trails and open spaces that provide an immense benefit to the residents that have supported and desired it for over 10 years.

Somerset County's 2006 Open Space Inventory shows that approximately 9,800 acres have been preserved in permanent open space. Approximately \$81 million dollars from the County Open Space Trust Fund has been spent to date in acquiring these open spaces for Somerset County residents. These open spaces range from areas where active recreation is prevalent, such as parks and various sports fields, to lands of passive recreation with trails and natural features.

Somerset County has also provided financial assistance for municipalities to pursue preservation of over 250 acres with nearly \$11 million dollars in funding through the County/Municipal Open Space Partnership Program, which began in 1999. Through this program, municipalities submit applications to Somerset County, which are reviewed by staff and a series of committees formed through the Somerset County Planning Board and Somerset County Park Commission. The Somerset County Board of Chosen Freeholders offers final approval on applications, and awards are then distributed to the respective municipalities. Municipalities often seek the technical and advisory assistance of nonprofits during this process.

The non-profit community has been a tremendous resource for land and resource conservation in Somerset County. They can offer an amount of technical and advisory assistance that is truly valuable in the pursuit of preservation. This document is a compilation of the nonprofit entities that Somerset County has worked with in the past and will continue to work with in the future. The mission of the nonprofit and contact information is given to allow municipalities to partner with the best possible agency for their cause.

Questions and comments in relation to this document, or the County/Municipal Open Space Partnership Program, are encouraged and welcome. Please contact the Somerset County Planning Board at (908) 231-7021 or visit our website at www.co.somerset.nj.us/planweb.

For questions about the Land Acquisition process or existing parks, recreation facilities and open spaces, please call the Somerset County Park Commission at (908) 722-1200 or visit their website at www.somersetcountyparks.org.

Somerset County Board of Chosen Freeholders

Robert Zaborowski, Director • Denise Coyle, Deputy Director
Peter S. Palmer • Rick Fontana • Jack M. Ciattarelli



Somerset County Planning Board
P.O. Box 3000
Somerville, NJ 08876-1262

Somerset County Partners in Preservation Guide



Somerset County Planning Board

P.O. Box 3000
Somerville, NJ 08876-1262
(908) 231-7021
www.co.somerset.nj.us/planweb

ANJEC

**www.anjec.org • National Area Served
(973) 539-7547**

"To promote the public interest in natural resource protection, sustainable development and reclamation and to support environmental commissions and open space committees working with citizens and other non-profit organizations."

Conservation Resources, Inc.

**www.conservationresourcesinc.org • Regional Area Served
(908) 879-7943**

"To increase the capacity, expertise and technical and financial resources available to private and public conservation organizations in order to maximize the preservation of open space and farmland in the Garden State."

Conserve Wildlife Foundation

**www.conservewildlifenj.org • Statewide Area Served
(609) 292-1276**

"To support the science and outreach activities of the Endangered and Nongame Species Program within NJDEP's Division of Fish and Wildlife."

Crossroads of the American Revolution

**www.revolutionarynj.org • Regional Area Served
(732) 721-1047**

"To raise popular understanding of the historical significance of New Jersey's Revolutionary War heritage, further both open space and historic preservation and enhance the quality of life and boost economic development in New Jersey through community revitalization and heritage tourism."

D&R Greenways

**www.drgreenway.org • Regional Area Served
(609) 658-6520**

"To preserve and protect a permanent network of natural lands and open spaces, creating the conditions for a healthy and diverse environment to flourish; To provide the public with appropriate access to these areas, encouraging active lifestyles and a greater appreciation of the natural world; and To inspire a conservation ethic promoting policies, educational programs and partnerships that result in a public commitment to land preservation."

Duke Farms Foundation

**www.dukefarms.org • Regional Area Served
(908) 243-3643**

"To be a model of environmental stewardship in the 21st century and inspire visitors to become informed stewards of the land."

Great Swamp Watershed Association

**www.greatswamp.org • Regional Area Served
(973) 538-3500**

"To protect drinking water and preserve land to maintain the natural beauty and enhance the livability of your town."

Hunterdon Land Trust Alliance

**www.hlta.org • Regional Area Served
(908) 237-4582**

"To preserve, protect, and enhance the county's scenic beauty, and its environmental and historic resources; To provide for the permanent preservation of farmland and to support and foster agricultural viability; and To promote the conservation and appropriate management of woodlands and open space."

Lamington Conservancy

**contact Alexandra Allen via telephone • Regional Area Served
(908) 234-0041**

"Protecting and preserving the rural open countryside of the Lamington River Valley."

Montgomery Friends of Open Space

**www.montgomeryfriends.org • Local Area Served
(908) 359-2845**

"To preserve open space in Montgomery Township and acquire land or interests therein; encourage and assist the local and county governments in their open space and conservation programs; create green infrastructure; work with public and private groups in neighboring towns to create a coherent regional green plan; steward lands subject to conservation or agricultural easements; encourage farmland preservation and to promote organic farming methods; promote public education and awareness of the natural environment; encourage passive recreation on preserved open space; engage in other charitable and educational activities related to open space preservation as may be appropriate; raise funds to accomplish the above goals."

Morris Land Conservancy

**www.morrislandconservancy.org • Regional Area Served
(973) 541-1010**

"To preserve land and protect water resources focusing on northern New Jersey; To conserve open space; To inspire and empower individuals and communities to preserve land and the environment."

The Nature Conservancy

**www.nature.org • Statewide Area Served
(908) 879-7262**

"To preserve the plants, animals and natural communities that represent the diversity of life on Earth by protecting the lands and waters they need to survive."

Natural Lands Trust

**www.natlands.org • Regional Area Served
(610) 353-5587**

"To protect the natural heritage of the Philadelphia region...for today and for generations to come."

NJ Audubon Society

**www.njaudubon.org • Statewide Area Served
(908) 766-5787**

"Develop, encourage, and support sound conservation practices, programs, and legislation; Disseminate information on the natural environment through education programs, information services, and publications; Advance knowledge of New Jersey's flora and fauna, and their relationships to the habitats on which they depend, through field research; and Acquire, establish, and maintain wildlife sanctuaries and educational centers."

NJ Conservation Foundation

**www.njconservation.org • Statewide Area Served
(908) 234-1225**

"The New Jersey Conservation Foundation preserves land and natural resources for the benefit of all."

NJDEP Environmental Infrastructure Trust

**www.njeit.org • Statewide Area Served
(609) 292-3859**

"Provides low-cost financing for the construction of environmental infrastructure projects that enhance and protect ground and surface water resources, ensure the safety of drinking water supplies, and make possible responsible and sustainable economic development."

NJDEP Green Acres

**www.state.nj.us/dep/greenacres • Statewide Area Served
(609) 984-0500**

"To achieve, in partnership with others, a system of interconnected open spaces, whose protection will preserve and enhance New Jersey's natural environment and its historic, scenic, and recreational resources for public use and enjoyment."

NJDEP Natural Lands Trust Management

**http://nj.gov/dep/njnltr • Statewide Area Served
(609) 984-1339**

"Preserves land in its natural state for enjoyment by the public and to protect natural diversity through the acquisition of open space. The Trust manages its properties to conserve elements of natural diversity, such as habitat for rare plant and animal species and rare ecological communities."

NJ Highlands Council

**www.highlands.state.nj.us • Regional Area Served
(908) 879-6737**

"The Highlands Council is charged with carrying out the provisions of the Highlands Water Planning and Protection Act, including the development of a regional master plan for the Highlands Region."

NJ Office of Smart Growth - TDR

**www.njsmartgrowth.com • Statewide Area Served
(609) 292-6420**

"The State Transfer of Development Rights Act authorizes the State TDR Bank to provide planning assistance grants up to \$40,000, with a 50% local match, for the purpose of preparing the documents required by the legislation: utility service plan and development transfer plan elements of the master plan; real estate market analysis; and capital improvement plan."

North Jersey Resource Conservation and Development Council

**www.northjerseyrcd.org • Regional Area Served
(908) 735-0733**

"To facilitate the wise use and protection of the regions human and natural resources."

NJ Recreation and Parks Association

**www.njrpa.org • Statewide Area Served
(732) 568-1270**

"To enhancing the quality of life by promoting recreation, parks, conservation, and leisure services through education, professional development, public awareness, legislative advocacy, and direct membership services."

NJ Water Supply Authority

**www.raritanbasin.org • Regional Area Served
(908) 685-0315**

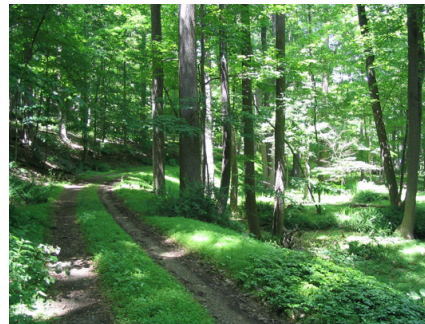
**www.njwsa.org • Regional Area Served
(908) 638-6121**

"To improve the protection of water resources for the Raritan River Basin, the Manasquan River Watershed, and the Delaware & Raritan Canal and its tributary watersheds."

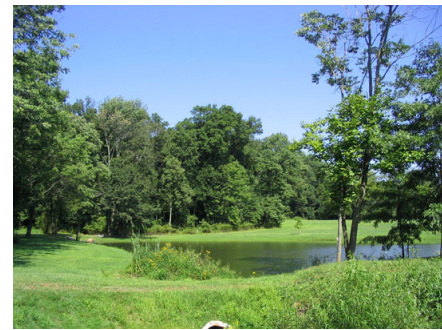
Outdoor Recreation Alliance

**www.outdoorrecreationalliance.org • National Area Served
(609) 392-1181**

"To secure a long-term stable source of funding for the acquisition, capital improvement, operation, maintenance, and stewardship of state and local natural areas, parks and historic sites in New Jersey. This work is guided by the belief that every New Jersey resident



deserves well-maintained, accessible neighborhood parks, wildlife areas and historic sites. Our communities rely on these areas for a high quality of life, livable neighborhoods and sustainable economies."



Passaic River Coalition

**www.passaicriver.org • Regional Area Served
(908) 222-0315**

"Distribution of a model law to protect community wells from contamination; Development of Open Space Master Plans for counties and towns; Work on the Second Passaic River Restoration Plan to guide urban municipalities in the creation of parks along the Lower Passaic River; Education for homeowners on backyard rain water management; Creation of the Blue Acres Program to buy homes in floodways; Preservation of sensitive river front lands through our Land Trust Fund"

Preservation New Jersey, Inc.

**www.preservationnj.org • Statewide Area Served
(609) 392-6409**

"To sustain and enhance the vitality of New Jersey's communities by promoting and preserving their diverse historic resources."

Trust for Public Land

**www.TPL.org • Statewide Area Served
(973) 292-1100**

"Conserves land for people to enjoy as parks, gardens, and other natural places, ensuring livable communities for generations to come."

Upper Raritan Watershed Association

**www.urwa.org • Regional Area Served
(908) 234-1852**

"To secure the environmental future of the Upper Raritan Watershed, through advocacy, land preservation, education and research."

Sierra Club, NJ Chapter

**newjersey.sierraclub.org • Statewide Area Served
(415) 977-5500**

"To explore, enjoy, and protect the wild places of the earth; To practice and promote the responsible use of the earth's ecosystems and resources; To educate and enlist humanity to protect and restore the quality of the natural and human environments.""

South Branch Watershed Association

**www.sbwa.org • Regional Area Served
(908) 782-0422**

"To protect the water resources of the South Branch of the Raritan River and its watershed."

State Agriculture Development Committee

**www.state.nj.us/agriculture/sadc • Statewide Area Served
(609) 984-2504**

"Leads in the preservation of New Jersey's farmland and promotes innovative approaches to maintaining the viability of agriculture."

Stony Brook-Millstone Watershed Association

**www.thewatershed.org • Regional Area Served
(609) 737-3735**

"To enhancing the quality of the natural environment in the 265-square mile region drained by Stony Brook and the Millstone River. We are committed to intelligent and informed land use decision making, the protection of water quality and supply, and the improvement of the community's awareness of environmental issues."